



**FIEDLER®**



# PRODUCT CATALOGUE

INNOVATIVE TECHNOLOGY for each SEASON



# MULTIMATIC CONTROL FMC

The **FIEDLER**® Multimatic Control FMC with proportional joystick and 3D-mouse is a future-oriented control and information panel, with which all **FIEDLER**® attachment devices and superstructures can be operated. It works completely on the CAN bus basis and enables data to be collected and remote maintenance. The control panel automatically detects the attachment and starts the necessary software for the user interface.



FRONT BOOM



SILO SPREADING ATTACHMENT



TANK SYSTEM



WEED BRUSH

- For all attachments the same control panel with automatic device detection
- Showing the position of the vehicle
- Record of all work carried out
- Registration of all costs, optimisations and planning for the following year
- Precise overview of the utilisation of the individual attachment devices
- Troubleshooting of faults and diagnoses by remote maintenance



# FRONT BOOM FFA

The front boom series FFA models are available with a reach of 3m to 7m from the middle of the vehicle to outer edge of mower head.

## OPTIONS

All front booms can be equipped according to the carrier vehicle, with and without its own oil supply. A wide variety of attaching plates and Hydraulic options are possible.

## IMPORTANT

A quick-change system enables step-less rotation and changing of the working tool within a few minutes.



QUICK-CHANGE SYSTEM



FFA 500



- The Fiedler rapid change system enables the attachment of more than 18 different working tools
- Boom series from 3m to 7m extension range
- Change of sides within a few minutes
- Arm relief with automatic copy control
- Counter slope mowing program



# WORK EQUIPMENT FOR FFA

There are a large number of attachments for the FFA front boom series, which make the maintenance work much easier and allow them to be carried out in a short time.

## IMPORTANT

The quick-change system enables the changing of equipment in a few minutes by only one operator. The stepless variable rotatability by 360° in the quick-change system allows the attachments to be positioned optimally.



- More than 18 professional working tools for maintenance and cleaning work
- One person operation of all working tools
- All tools can be used on the right or left of the vehicle

TWB – Tunnel washing brush | LWB – Marker Post washing brush | SWB – Sign washing brush



LRS – Light space profile trimmer



FFA 451 P





# WORK EQUIPMENT FOR FFA

All working tools are interchangeable with each other by the standardised quick-change system for all FFA series.

- Work equipment with high cutting performance
- The work equipment has been developed for professional use
- All work equipment is GS tested

## IMPORTANT

Depending on the size of the front boom, there is the appropriate working tool. With the multiplicity of working tools, the front booms become the professional helpers in cleaning and maintenance work.

SA – Laterally driven | MA – Centrally driven | AS – Aspiration



FFA 301-P





# WATERING ARM FGA

The FGA 500 | 700 | 1000 | 1200 series are all equipped with electric drive and proportional CAN bus control. All transmission components, main and auxiliary brackets, and pipes are manufactured in stainless steel. An innovative swivelling movement guarantees a swivelling range of 240° in front of the vehicle. By means of a parking device with wheels, the watering arm can be installed and dismantled by only one person.

### OPTIONS

The watering arms can also be controlled hydraulically directly by the vehicle or via a hydraulic block. The insulation of the pipelines makes it possible to discharge hot water with special lances with up to 120 °C for weed eradication. From the control panel and joystick, the flow rate can be adjusted continuously by means of a shut-off valve with quantity regulation. The set water quantity per planting is automatically distributed and switched off via a dose counter.

### IMPORTANT

With the aid of different shower heads, the appropriate water shower in shape and size can be produced for each application.



FGA 700 ELECTRICAL



FGA 500 HYDRAULIC

- Brackets and pipes made of stainless steel
- Electric drives equipped with proportional CAN bus control
- Innovative swivelling movement in front of the vehicle
- Automatic parking
- Memory function (positions are automatically approached)
- Dose counter
- Shut-off valve with volume control



# WATERING ARM FGA

The kinematics of the watering arm can be used to bring it to the right/left or centre of the transport position. An automatically unlocking transport lock permits an immediate start of work at the site without leaving the vehicle. All lines and connections are protected on the watering arm construction so that they cannot be damaged.

**IMPORTANT**

A collision guard under the watering arm protects the device from damage during work. The innovative electronics ensure that the vehicle battery is not discharged during the work.



- There is the right watering arm size for every vehicle
- Can be attached to all vehicles thanks to the electric drive (pick-up, transporter, small tractor...)
- Attachment and dismantling with just one person
- The watering arm was developed by professionals for professionals



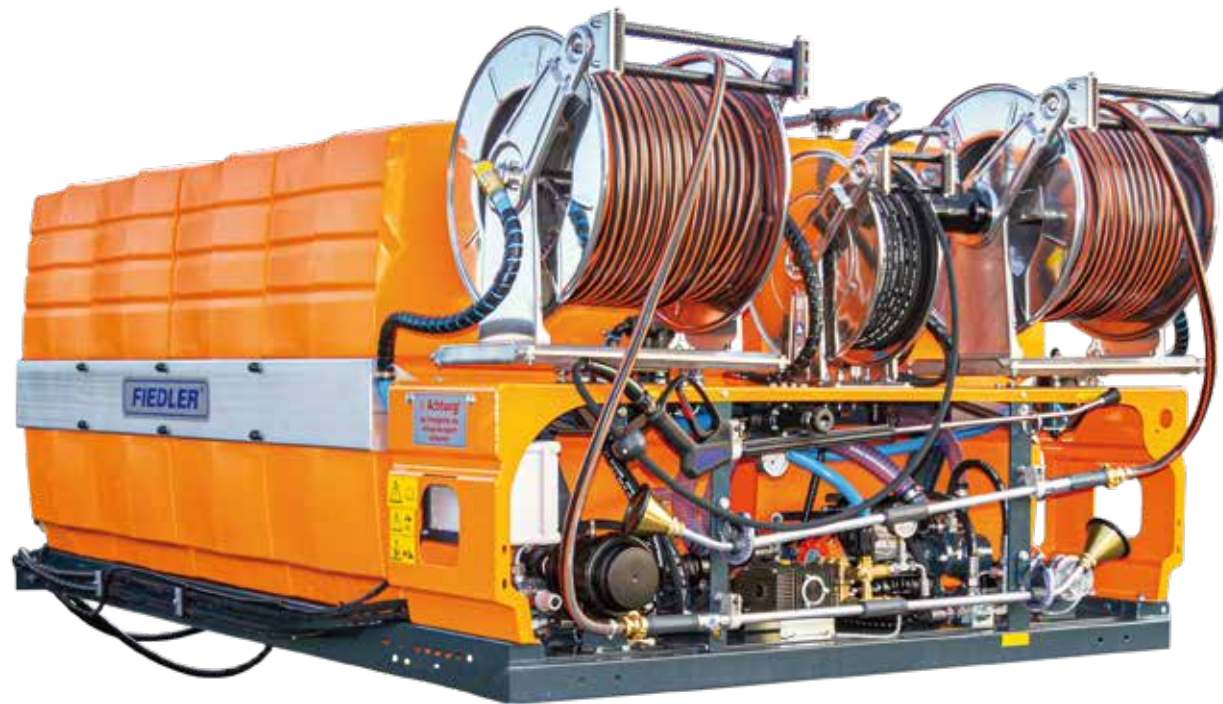
**FGA 1200**





# TANK SYSTEMS FTS

By developing innovative tanks in cascade construction, the optimum tank volume in width and height can be produced for each vehicle. From 230l to 17600l, the tank systems (in the required colour variants) are equipped with a wide variety of pumps for irrigation, watering, flushing, high pressure cleaning or for applying brine.



WITH PETROL PUMP



FTS 2000/3



WITH DOSING UNIT



FTS 11000/5

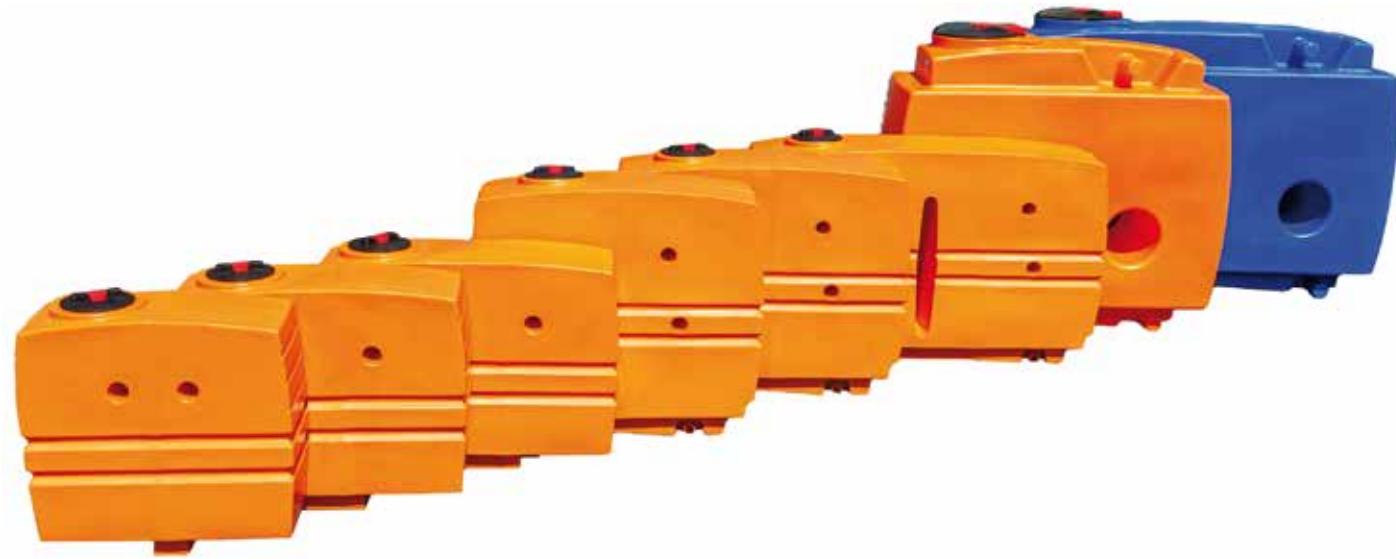
- The tank system can be mounted optimally on each vehicle type
- Charge protection according to VDI 2700
- Thanks to the modular system, all requirements regarding reels, pumps and tank volume can be optimally customised





# TANK SYSTEMS FTS

The high-quality polyethylene tanks are manufactured in four fixed height dimensions, but in different widths, depending on the vehicle type. The tank systems are UV-resistant, can be used from -40°C to +60°C and are released for drinking water transport.



FTS 3400/4 - BOOM



FTS 3400/4



FTS 2700/4



FTS 2000/3



FTS 3400/4 POWERPACK



FTS 3400/4



FTS 5100/6



FTS 8800/4



FTS 6600/3



FTS 3400/4



FTS 1800/3



# FLUSHING BAR FSB

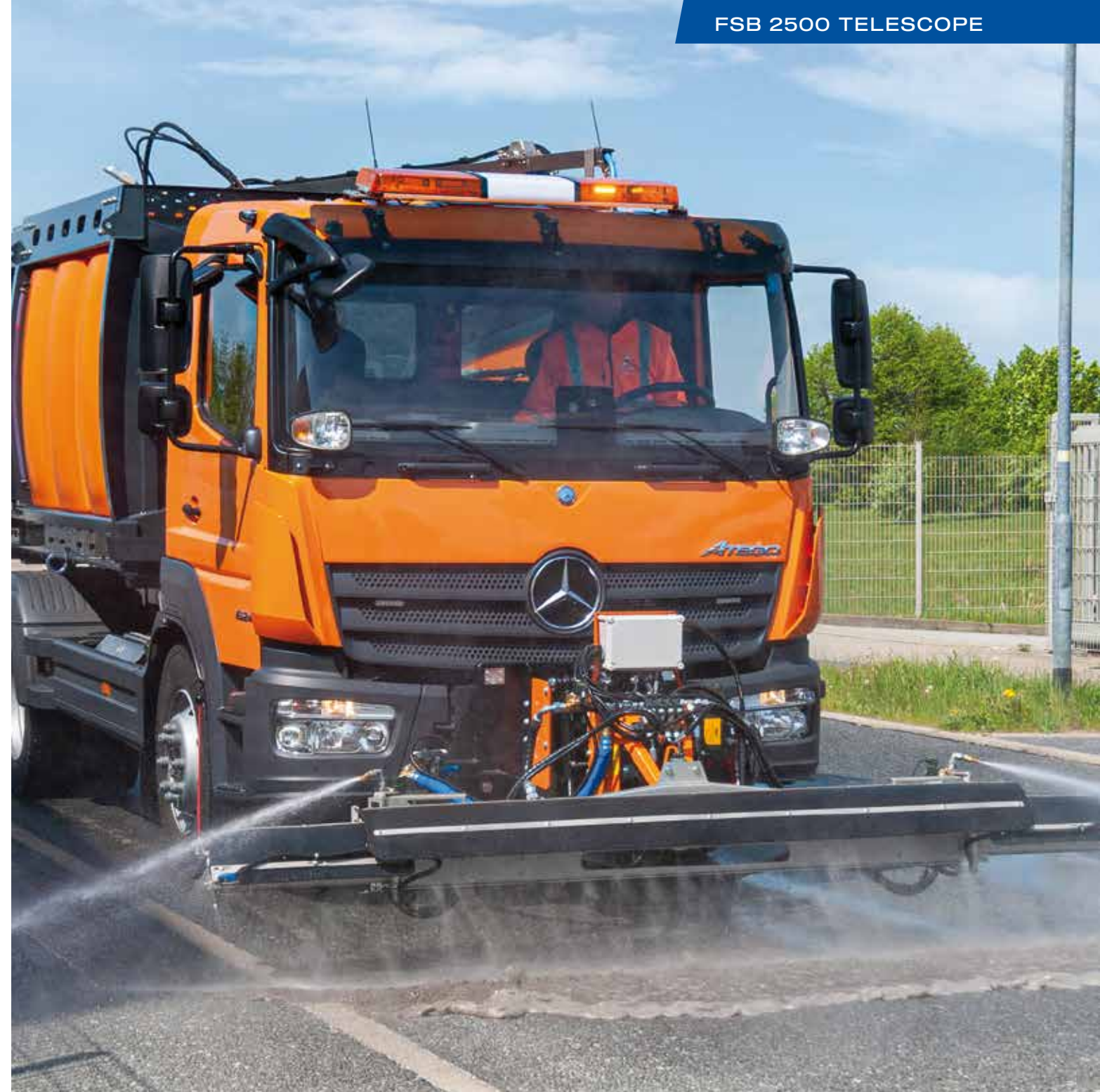
The series of flushing bars can be mounted on the smallest centre-pivot steering vehicles up to the largest trucks. The flushing bars are always optimally designed for the required flow rates and water pressures.

## OPTIONS

The flushing bars are designed to be telescoping. In addition, they can be equipped with controllable frog-mouth nozzles, jet nozzles and sections that can be switched on and off. The mounting system makes it possible to install additional pumps, hose reels, etc.



FSB 1500 TELESCOPE



FSB 2700 WITH HOSE REEL



FSB 1800 TELESCOPE



FSB 1500

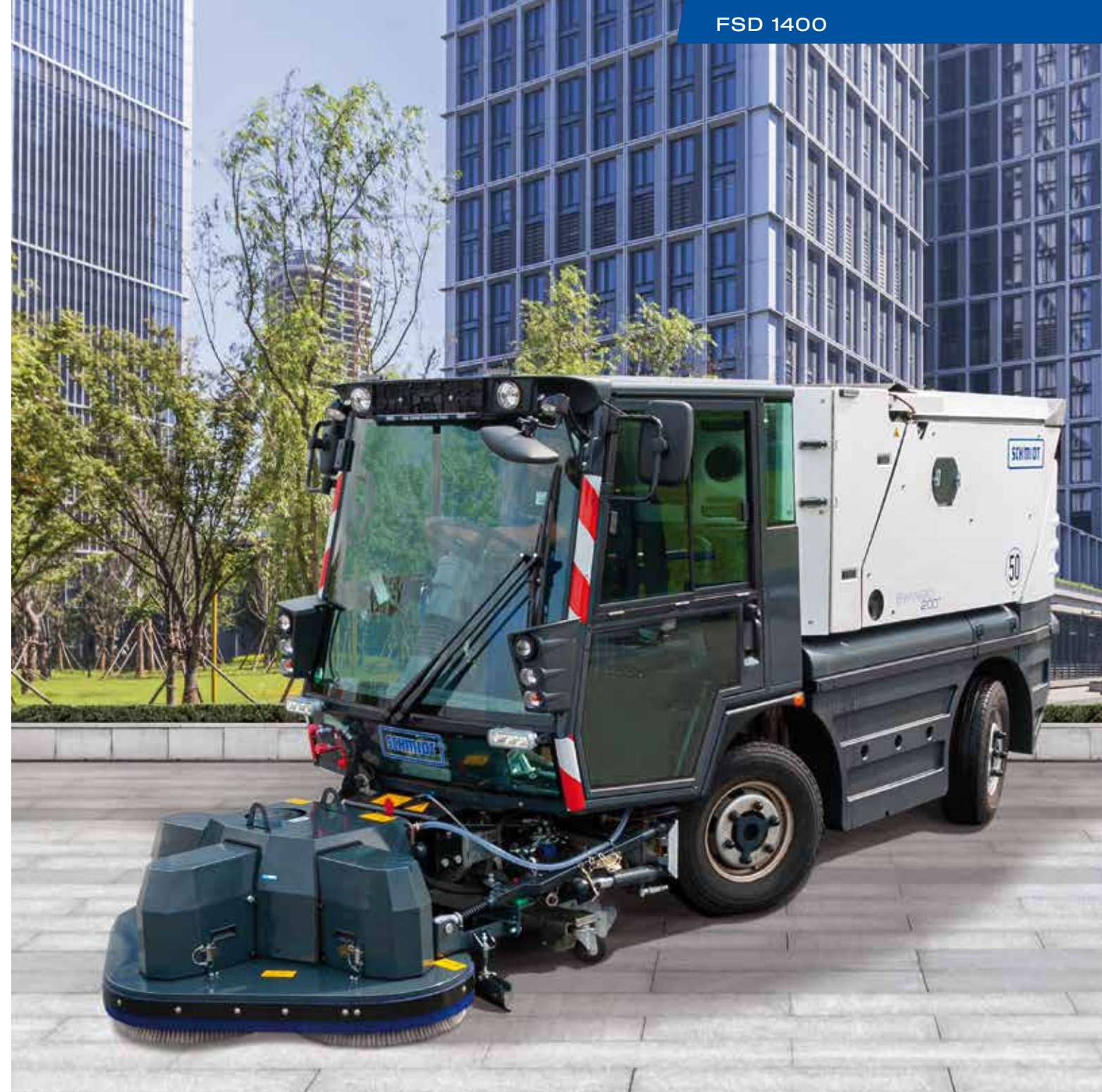


# SCRUBBING DECK FSD

The Fiedler Scrubbing Deck FSD1400 was specially designed for use on large flat surfaces and car parks. On a working width of 1.40m, extreme soiling can also be easily removed by using different disk brushes and cleaning chemicals. The three brush plates are arranged in a triangular shape to make it easier to get into corners and around columns during cleaning. The installation and dismantling takes place with a mobile parking trolley.

## IMPORTANT

- Short front part dimensions
- All-round collision protection made of PE
- optional suction bar
- Brush plate with individual suspension, integrated height adjustment and quick-change system
- Large container (35l) for cleaning chemicals with automatic dosing



FSD 1400



FSD 1400



FSD 1400



# TUNNEL WASHING SYSTEM FTWB

The tunnel washing systems can be mounted on equipment carriers or trucks. The tunnel radius is detected via sensors and the set distance to the tunnel wall is automatically kept. In addition, by means of an inclination sensor, the washing brush recognises whether the wall, footpath or lamps are to be cleaned. The washing brush is used for cleaning signs and wall surfaces.

## OPTIONS

Optionally, the systems can be equipped with medium-pressure or high-pressure hand lances in order to clean various objects.



HIGH PRESSURE HAND LANCE



MEDIUM PRESSURE HAND LANCE

FWB 1100



FTWB 2100



# FRONT SWEEPING MACHINE FKM / FFK

Three series of front sweepers are produced in sweeping technology. The small series with central drive is available in various widths, with mechanical, hydraulic or electrical drives. A flexible cover prevents snow sticking and freezing and protects the sweeping system.

The large series with central drive is only available with hydraulic drive.

The central drive sweepers can additionally be equipped with an adjustable brush cover and water spray bar.

## OPTIONS

The lateral drive model can be used as a free-sweeping road sweeper for snow and dirt. In addition, can be equipped with a quick-change dirt hopper optional side brooms and water spray bar.



FKM MECHAN. DRIVE



FM HYDR. DRIVE



FKM ELECTR. DRIVE



FFK WHEEL LOADER

- The swivel point for the sweeper machines with central drive is located in the center of the sweeper roller—no swivelling out to the side
- Brush Segments quickly interchangeable
- The sweeping level is adjusted using one or two heavy duty support wheels



# FOLIAGE/WASTE INTAKE FLA FOLIAGE/REFUSE VACUUM FLAS

The FLA 1301 and FLA 1250 H foliage and waste receptacles are a novel solution for the foliage and waste removal on water-bound pathways and lawn areas.

The material is picked up purely mechanically by means of a tine shaft. Thus sand, chippings and stone material remain. However, foliage, smaller branches and waste are taken up, thrown into a trough, conveyed via a screw to the impeller and shredded with knives. The spring tine shaft can be changed against a brush shaft or a tine shaft with plastic tines.



PLASTIC TINES



SPRING TINES



SIDE BROOM



BRUSH FACING

- Novel foliage collection system for water-bound paths
- After picking up, the shredding and transport of the foliage takes place
- Depending on the condition of the floor, the mounting kit can be replaced
- Optionally the machines can be fitted with a coarse dirt flap



# FOLIAGE/WASTE INTAKE FLA FOLIAGE/REFUSE VACUUM FLAS

The foliage and refuse vacuum FLAS 1210 has been designed to absorb foliage and lightweight rubbish on lawns and solid hard surfaces (concrete, asphalt). The machine optionally has a lateral movement or side shift, a manual suction hose and a blower unit to clean the cycle paths and the side verges of leaves. In combination with a collecting container or lightweight construction attachment, large quantities of foliage can be taken up and disposed of very effectively.



- Can be used more flexibly with lateral displacement
- Equipped with Hardox wear plates
- The foliage and refuse vacuum is suitable for cleaning lawns, roads and paths of firm ground

FLAS 1210 BLOWER



LIGHTWEIGHT ATTACHMENT



SUCTION CONTAINER



WITHOUT TURBINES



FLA 1301



PARK PATHS



FLA 1301 LIGHT WASTE



MANUAL SUCTION



SIDE BROOM

FLA 1301





WEED ERADICATION

# WEED BRUSH FWK

The two construction series of the weed brush are used to remove weeds from roads and way side and to clean public open spaces. These machines can be fitted with brush plates in diameters of 650mm, 700mm and 900mm. Depending on the size of the vehicle, it can be equipped with a displacement frame up to 2.50m in width.

OPTIONS

The machines may be upgraded with an optional comfort package including wiping function and contact pressure control.



FWK 710



FWK 702



FWK 702 PUSH/WIPE FUNCTION



FWK 702 COMFORT PACKAGE





# HOT WATER SYSTEM FTS COMBIPOWER / - PLUS

The series of hot water systems for thermal weed removal is produced on the basis of the modular tank systems. The CombiPower system is equipped with 100kW and the CombiPower Plus system with 200kW of heating output. This system can be used for flushing, watering and cleaning. In the hot water mode, hot water in the temperature range from 98°C to 120°C (adjustable) is dispensed via various front and rear attachment devices. An optional stainless steel hose reel with 15m or 25m high-pressure hose can be used to dispense it via the rear devices.

## OPTIONS

- Stainless steel hose reel with 15m or 25m high pressure hose
- High pressure pump 15l / min at 200 bar
- Lighting device and LED flashing lights
- Different application attachments for the hand lance

## IMPORTANT

Fully automatic working system



COMBIPOWER CONTROL INTERFACE



FTS 2000/3 COMBIPOWER PLUS

- Automatic start-up and shutdown as well as control of the burner
- Pre-heating program for increase in performance
- The system is equipped with an automatic decalcification program
- Burner automatically goes into standby mode during breaks
- Automatic dosing agent pump for water softening
- In watering mode with a watering arm, the volume control is up to 70l / min at max. 5 bar and the dose counter used



# HOT WATER SYSTEM FTS COMBIPOWER / - PLUS

Due to its versatility, the hot water system can be used for a variety of tasks. With the hand lance in the medium pressure range with different widths of hot water heads, in the high pressure range with rotor and flat jet nozzle and in the low pressure range with shower head. In addition, in the low-pressure area, a watering arm or a hose reel with watering lance can be used on the front side.

## WEED KILLER FUV

Likewise, in hot water mode, a weed destroyer is used in various widths with a partial width cut-off or a watering arm with different hot water attachments.

HP – High pressure | MP – Medium pressure | LP – Low pressure



HAND LANCE MD

HAND LANCE MD



ROTOR NOZZLE HD



DELINEATORS LANCE



FROG-MOUTH NOZZLE



WEED KILLER



WATERING ARM



WATERING LANCE ND

- Dispense hot water from the front via weed killers with partial width cut-off and curb nozzles
- Dispense hot water from the front using a watering arm with various hot water attachments
- The weed killer works with lateral displacement and can be used on the right or left side to the centre of the vehicle



# PLOUGH BLADE FRS

The FRS plough blade is available in four series, depending on the geographical altitude and the road condition.

## FULL-FOLDING BLADE

The full-folding blade is a standard design with a swivel cylinder, a very stable cross beam and a rounded blade. The second construction series of the full-folding blade is the heavy design with two swivel cylinders and a high-strength cross beam with inclination adjustment of the blade.

## SPRING FLAP SNOW PLOUGHS

The spring flap snow ploughs exist as a »light« version (LV) and also as a »heavy« version (HV). They differ in the blade height, the spring flap design and the connection to the attachment plate.

LA – light version | SA – heavy design



FRS 2004 STANDARD



FRS 2004 STANDARD



FRS 2004



FRS 2004



3-DIVIDED BAR



FRS 2010 LA



FRS 2010 LA



FRS 2010 LA



FRS 2620 SA



FRS 2620 SA



# WEDGE PLOUGH BLADE FKP

The wedge plough blades are manufactured in two series. These differ in the blade height, the spring flap design, the pivot point to the attachment plate and the angle in the wedge position.

## BLADE POSITION

The advantages of the wedge plough blades lie in the variable possibilities of use. Whether as a side clearance shield to the right/left, in the V position to clear public spaces or in the wedge position to break up drifts, the plough blade has a high added value.

## COMFORT CONTROL

The Comfort controls option is an intelligent solution for the rapid selection of blade positions. Both blade are actuated simultaneously or individually by means of FMC and a 3D-mouse. In addition, there is the area clearing function, which automatically lifts the wedge plough blade and lowers it into the floating position.

LA – light version | SA – heavy design



FKP 1505 LA

FKP 1505 LA



FKP 1310 SA

FKP 1310 SA

FKP 1310 SA



INCLINATION ADJ.



INCLINATION ADJ.



INCLINATION ADJ.



COMFORT CONTROL



FMC - COMFORT CONTR.



# SNOW PLOUGH & BRUSH COMBI FRK

With changing weather conditions in winter, it is always difficult to adjust to the correct clearing. The adaptation to the respective weather conditions is associated with conversion time and effort. With the Fiedler snow plough & brush combi, you can combine both applications in one machine. The installation is simple for all municipal vehicles and tractors. During operation, it is possible to switch directly between sweeping and clearing. The snow plough & brush combi is not only used at airports but also in cities and municipalities.

## OPTIONS

The clearance shield unit can be equipped with different clearing bars.

## IMPORTANT

The Fiedler snow plough & brush combi is available in widths of 1.60m and 2.00m.



FRK 1600 SWEEPING



FRK 2000 CLEARING





# ROLLER SPREADER FWS COMBINATION SPREADER FWS KOMBI

The construction series of roller spreaders with the option of retrofitting to the combination spreader is designed for rear-end attachment on narrow-gauge vehicles and use in the inner-city area. With the spreaders one always achieves a perfect spreading pattern. With a large number of options, such as the fully automatic, speed-dependent regulation, acoustic level indicator, one can not do without the spreader in inner-city winter services.

## ROLLER SPREADER

A camshaft with interchangeable stainless steel cams creates an exact spreading pattern in carpet form with all spreading materials such as sand, sand-salt mixture, salt and grit.

## COMBINATION SPREADER

With the version for the combi spreader, a screw unit with a spreading disc is activated at the push of a button, so that public places and streets with a width of up to 8m can be covered. There is a spreading pattern adjustment as standard.



FWS 350 KOMBI



FWS 200 KOMBI



FWS 350



FWS 200 KOMBI



# FLAT-HOPPER SPREADER FSS

The silo spreader attachment construction series developed for the highest demands offers the functionality and reliability of professional spreaders. In the construction series, new technologies merge with decades of experience from FIEDLER to a flat-hopper spreader that is innovative in many details.

## OPTION

The flat-hopper spreader construction series has a high basic equipment. In addition, the FIEDLER FMC has a fully automatic speed-dependent regulation, data acquisition via GPS, a rear-view camera, electrical asymmetrical spreading pattern adjustment, electric spreading control, road temperature detection and much more.



Kp – Ball points | AR – Rolling frames

FSS 1501 KP



FSS 1501 AR



FSS 600



STEP BY STEP SYSTEM



FSS 2000



FSS 1100



- Combines the advantages of a belt and screw spreader
- No formation of tunnels, as the spreading material is gradually dispersed
- Largest filling volume with the smallest installation space
- Flat construction design and low centre of gravity
- Standard coating according to corrosion protection class C5



# WET-SALT SPREADER FFSS

The wet-salt spreaders are listed under the type designation FFSS 850 to 2300. As with the dry material spreaders, there is the option of incorporating them on a skip loader or flat bed demountable system. The salt is mixed with the brine before and when the material strikes the mixing cone of the spreading disc. The application ratios of FS 0 to FS 100 are possible. A flexible chute reliably prevents the salt from sticking to the inner wall.

### OPTIONS

In the case of the wet-salt spreaders, there are the same options as for the dry material spreaders.

### IMPORTANT

Just like the series of dry substance spreaders, the series of wet-salt spreaders is GS-tested. The fully automatic speed-dependent control of the spreading quantity and the setting of all necessary parameters takes place exclusively via the FIEDLER FMC.



SPREADING MATERIAL DISTRIBUTOR, WET SALT



FFSS 1600

- The wet-salt spreader works with 0.85m<sup>3</sup> to 2.3m<sup>3</sup> of total volume
- No tunnel formation thanks to the STEP by STEP system (stepwise supply system of spreading material to the worm screw) in the solid container
- No sticking of spreading material in the flexible chute





# BRINE SPRAYING SYSTEM FSSA / FSSAZ

The FIEDLER company produces brine spraying systems for all categories of vehicles. Whether power hydraulics or PTO, whether tractor, articulated steering or truck, our systems fit everywhere.

These constructions can also be used for irrigation in summer (e.g. in combination with a watering arm). The systems are assembled from modular PE tanks. These can be individually adapted depending on the vehicle width and construction length. The size of the tank systems is available for all categories of vehicles from 230l to 17600l of brine.

The brine-spraying system series has two closed control loops for the application. Thus, in addition to the pressure, the actually applied quantity in ml/m<sup>2</sup> is permanently monitored and readjusted automatically if necessary.



FSSA 11000



FMC FOR BRINE



FSSA 975



HAND LANCE



FSSA 550 ELECTR.



FSSA 550 HYDR.

- Minimum quantities of 5ml / m<sup>2</sup> are also applied precisely, even at low driving speeds
- The spray width can be increased to the right/left of the vehicle at the push of a button
- As standard: Stainless steel hose reel with hand lance (18m)
- Optionally available: Level indicator with range display, evaluation of distances and quantities driven, LED warning lights and wide-range nozzles



# BRINE SPRAYING SYSTEM FSSA / FSSAZ

For the brine spraying systems with PTO drive, the systems with 275l to 2,200l brine load can be delivered. The control is performed using the FIEDLER FMC and is optionally available with full path dependency using GPS. There is also an optional real-time level indicator with integrated driving range indicator and much more.



FSSAZ 1650



FSSAZ 1000

FSSA 2000 WITH 8-12M EJECT RANGE



- Brine spray systems for airports on small equipment carriers have a spraying distance of up to 12m
- The spray pattern to the right/left of the vehicle is reduced and increases in 1m steps
- The asymmetry of the spray pattern can be adjusted on the rotary push button of the FIEDLER FMC



# POSSIBLE CONTROLS

The controllers for winter service units are adapted to customer needs and our spreader constructions. Whether roller spreader, combination spreader, dry material or wet salt spreader, all controls operate on the CAN bus basis.

## SEMI-AUTOMATIC

The semi-automatic control is a start-stop automatic which switches on the construction hydraulics and thus switches on the spreader construction at approximately 1km/h and off again when it is stopped. This feature is activated or disabled via a switch.

## TOUCH ENCODER

The touch encoder is a digital roller spreader control that has several control surfaces and operating levels. The individual functions are switched on by tapping the corresponding symbol. By rotating the integrated rotary wheel the application quantity, for example, can be changed. Attention signs and symbols provide information for the operator.

## FMC MULTIMATIC CONTROL

The FMC is a future-oriented control and information panel operating on a CAN bus basis with a 4.3" colour display. It automatically detects the attachment and starts the necessary software for the user interface. A broad spectrum for the operation, diagnosis and maintenance is possible for controlling the spreader constructions.



SEMI-AUTOMATIC



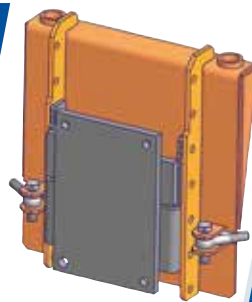
TOUCH ENCODER



FMC



FRONT GEAR LIFTING



ADAPTOR PLATES



LAMP HOLDER



DATA RECORDING



TRUCK HYDRAULICS



# SPECIAL SOLUTIONS

The front implement lift is available with and without electro hydraulics. It is attachable to all vehicles with a rigid attachment plate or for retrofitting for municipal equipment carriers up to 7.5t. The universal front implement lift offers an inclination adjustment and may be equipped with an optional weight compensation. The front-attachment plate is interchangeable with all adapter plates and coupling triangles.

The adapter plates are used for universal device mounting on narrow-gauge vehicles and municipal device carriers up to a total weight of 7.5t.

Our lamp holders are designed to retrofit municipal narrow-gauge vehicles and equipment carriers with a total weight of up to 7.5t. These can be upgraded with one or two LED rotating beacons and an LED flashing light bar.

With the data recording FDA, it is possible to record the status of the respective attachment and construction units in conjunction with the position data. This ensures verification management of the work performed.

Depending on the upgrading stage, many additional functions are available, such as data evaluation, order and route planning right up to the partial automation of the attachment and construction units.

Truck hydraulics for coupling independent power take-off according to DIN EN 15431. Control takes place via the FMC colour display. The system incorporates an efficient axial piston displacement pump with LS control block for an oil circuit at 0-90l/min and up to 315 bar. The hydraulic system has an oil tank and an oil cooler. Optionally, there is a proportional block with two double-acting functions, one of which is connected to the floating position. The amounts of oil are adjustable from 0 to 25l/min at 200 bar. The functions can also be switched as continuous consumers.

## UNIVERSAL FRONT IMPLEMENT LIFT

## ADAPTER PLATES

## LAMP HOLDER

## DATA RECORDING

## TRUCK HYDRAULICS

# FIEDLER INNOVATIONS

## PROVEN WORLDWIDE

The company **FIEDLER**® Maschinenbau und Technikvertrieb GmbH was established in 1990. We are a modern family company with high flexibility and short decision-making processes.

The **FIEDLER**® brand stands not only for innovative technology, very good quality and comprehensive service, but also for internationality. The products in the field of mowing technology and summer service, water and watering technology, foliage, waste disposal and weed eradication as well as winter service offer what you specifically need for your tasks. Our products are characterised by innovation, a high level of quality, longevity and economic efficiency for the user.

Made in GERMANY - from development through testing, production to attachment and installation or shipping, our employees ensure that customers are completely satisfied.

Your **FIEDLER**® Team

DEVELOPMENT



PREFABRICATION



COATING

ATTACHMENT  
CONSTRUCTION

FINAL ASSEMBLY



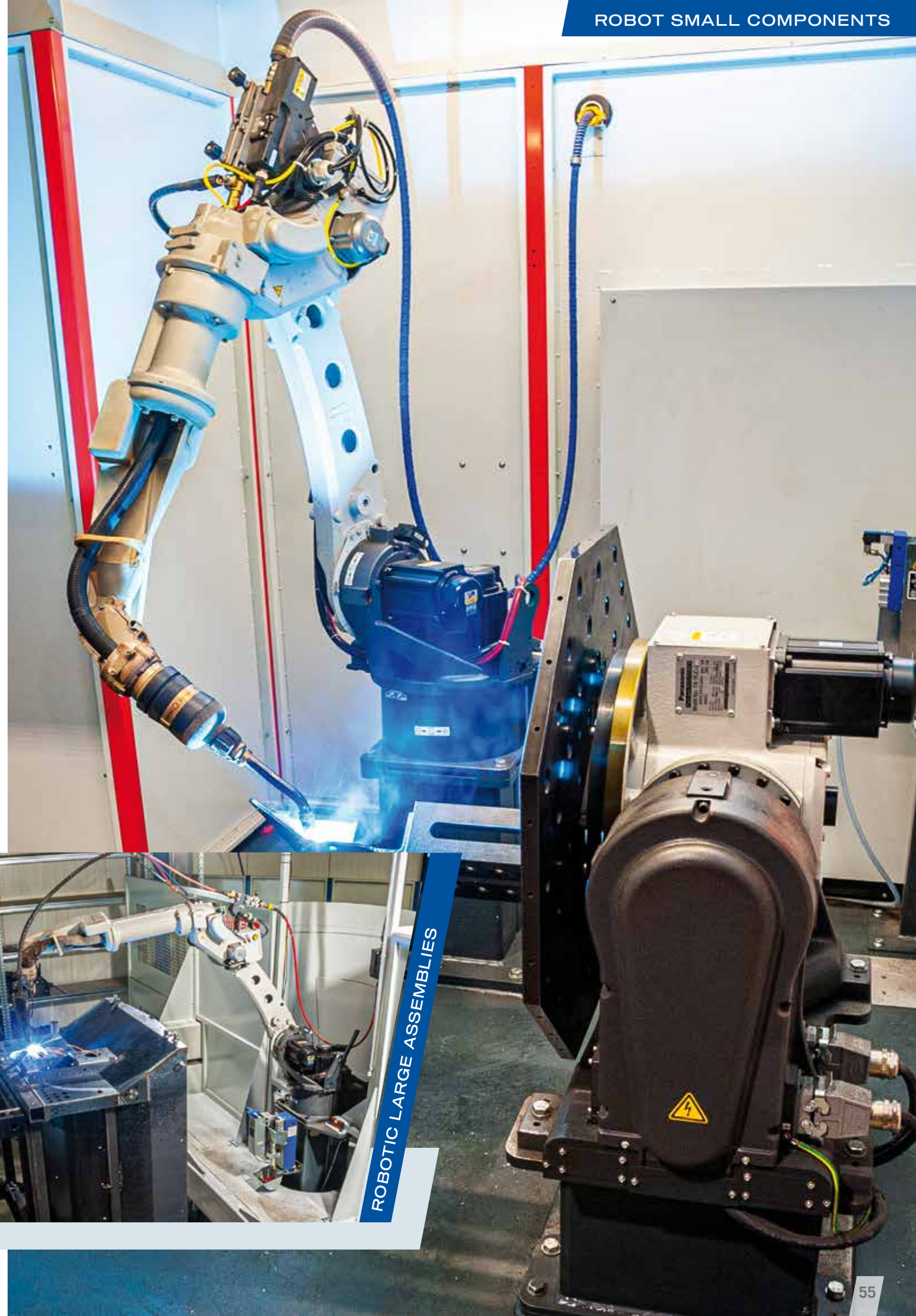
FINAL INSPECTION



ET DISPATCH







ROBOTIC LARGE ASSEMBLIES





**FIEDLER**<sup>®</sup>

Dresdner Straße 76 c · 01877 Schmölln-Putzkau, Germany  
Phone +49 (0) 3594 74 58 00 · Fax +49 (0) 3594 - 74 58 0 44  
info@fiedler-gmbh.com · [www.fiedler-maschinenbau.de](http://www.fiedler-maschinenbau.de)

-  [facebook.com/kommunaltechnik](https://facebook.com/kommunaltechnik)
-  [youtube.com/fiedlergmbh](https://youtube.com/fiedlergmbh)
-  [instagram.com/fiedler\\_kommunaltechnik](https://instagram.com/fiedler_kommunaltechnik)
-  [flickr.com/kommunaltechnik](https://flickr.com/kommunaltechnik)

The manufacturer expressly reserves the right to make technical, design and functional changes at any time without notice. Illustrations, dates and markings in this document in this document are indicative, not binding.